

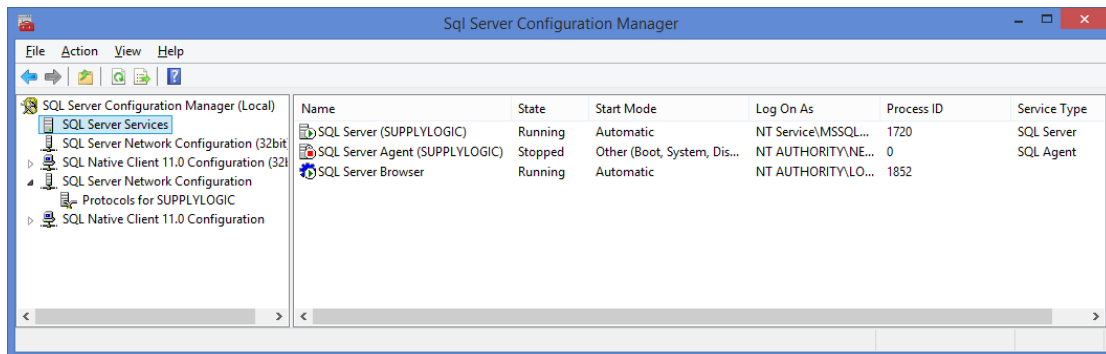
SQL Server 2012 Configuration Manager

Settings for SupplyLogic

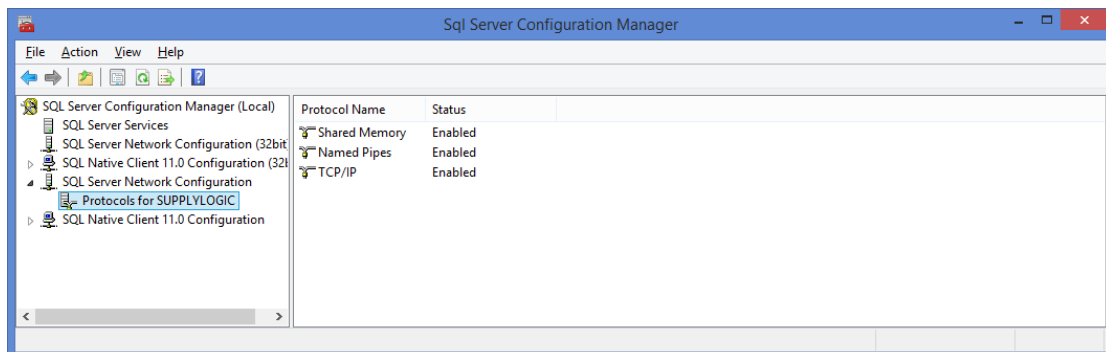
SQL Server 2012 Configuration Manager

This is a tool that is installed with Microsoft SQL Server 2012 Express. Run this program to adjust the remote connection settings for the SQL database engine.

- In the Windows 8 search box (hover mouse in upper right corner of screen) type “SQL” to bring up the SQL programs installed. Right-click on the SQL Server Configuration Manager and select “Run as Administrator”.
- Highlight the **SQL Server Services** entry in the panel on the left. Verify that the **SQL Server (SupplyLogic)** and the **SQL Server Browser** have the following settings:
 - State: Running
 - Start Mode: Automatic



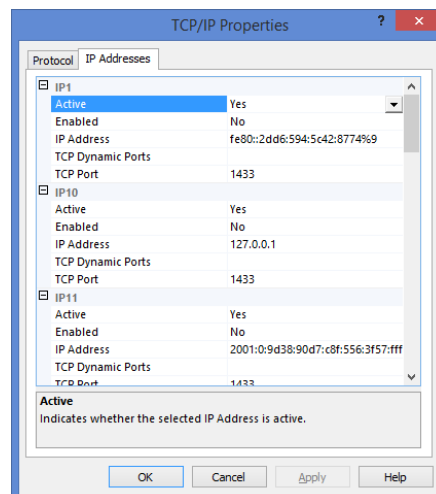
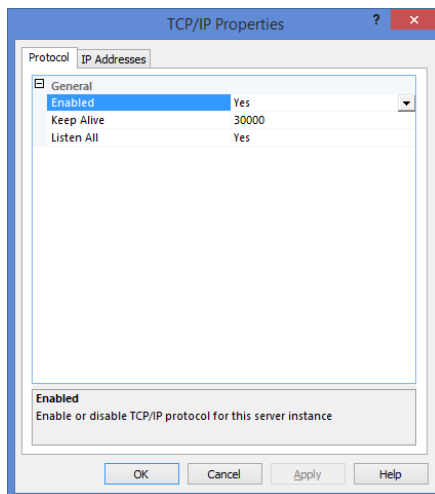
- Highlight the **SQL Server Network Configuration** entry in the panel on the left.
 - Highlight the **Protocols for SUPPLYLOGIC**
 - Enable **Shared Memory, Named Pipes and TCP/IP**
 - You will get a message saying the services need to be stopped and restarted for the settings to take effect. This will be done later.



SQL Server 2012 Configuration Manager

Settings for SupplyLogic

- Highlight the **TCP/IP** protocol, **Right-click** it and select **Properties**. Verify the following on the Protocol tab:
 - Enabled Yes
 - Keep Alive 30000
 - Listen All Yes
- Click on the IP Address tab and make the following changes:
 - IPAll
 - TCP Dynamic Port blank (clear out)
 - TCP Port 1433
 - IP1-IP?
 - Active Yes
 - Enabled No
 - IP Address DON'T CHANGE
 - TCP Dynamic Port blank (clear out)
 - TCP Port 1433



- Click Apply and OK to get back to the main screen.
- Highlight the **SQL Server Services** entry in the panel on the left. Stop and Start the **SQL Server Services** and the **SQL Browser Service** by doing the following:
 - Highlight the **SQL Server (SupplyLogic)** entry.
 - Right-click and select **Stop** (wait for it to stop).
 - Right-click and select **Start** (wait for it to start).
 - Do the same for the **SQL Browser Service**.